

## Serving Bellingham

Christ Church has been present from the start of the estate in 1923. The building has gradually become a hub for small community-led groups.

Although small in number, the church congregation values the individual, and seeks to serve the community and the needs of the world's poor.

### Sunday: Service of Worship followed by refreshments

10.30 am

Holy Communion on the 3rd Sunday of the month

*Wherever you are on your journey,  
we are here for you*

*We are a community  
that shares  
God's love and joy  
in the hope of making  
the world a better place*

## Hiring the building

Community groups may hire the building for specific purposes. Facilities include an accessible toilet, free WiFi, and a catering standard kitchen.

All lettings are arranged through the Minister.

## Volunteering Opportunities

Most of the groups rely on members and volunteers.

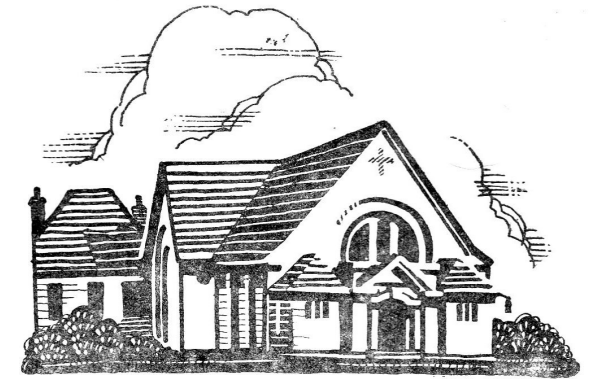
Contact the Minister if you are interested in helping.

## Contacts

**Minister:** Revd Fiona Thomas  
07905 889 260  
info@ftconsults.co.uk

**Elders:** James Awotula  
Peace Nartey

Welcome to  
**The Christ Church Hub**  
15 Bellingham Green  
SE6 3HQ



## Community-led Activities (as of 22.10.24)

### Monday

**Lunch Club:** A hot meal, bingo, social for people aged over 55.

Weekly £5. Opens at 11.00.

Leader: Cathy Chambers

07880 670 241



**Citizens Advice Lewisham:** Outreach session on the first and third Monday of each month 2pm-4pm.



### Tuesday

**Belltots:** Drop-in play group for children under five and carers. 10.00 to 12.00. £3 for first child + 1 adult; £1 for additional children. Leader: Roma Granger



### Wednesday

Routine building maintenance  
Available for hire by community organisations offering training and support events.

### Thursday

**Young at Heart:** Social, craft, members group. 2pm - 4.30pm £3, including raffle.

Contact: through Anna Post at Bellingham Linking Lives 07918 981 549



### Drop-In Friday

**12.30pm - 4.30pm.**

Hot drinks, biscuits, fruit, board games, chat, magazines. Help and support. Details below:

**Simple Hot Lunch:** 12.30

**Crafting:** 2pm-3pm

**Gentle Exercise:** 3.15pm - 4.15pm

**Digital Drop-In:** 2-30pm - 4-30pm.

Help with online services, and technical support with your phone and other devices.



**Help Desk:** 2pm - 4.30pm.

Signposting to information on a full range of issues.

### Saturday (all day) and Sunday afternoon: Don Bosco School

Maths, science and english supplementary classes for Tamil students.



### Bellingham Linking Lives

A befriending service for older adults who find themselves requiring some extra friendship and support, provided through weekly home visits. Volunteer visitors are carefully selected, trained and assessed before being matched with scheme members.



Contact: Anna Post 07918 981 549

### Free WiFi throughout the building

Network: ChristChurch  
Password: playnice

